

**BrowXenna**

# MONO STEP

THE GAME CHANGER  
IN LASH&BROW LAMINATION



# MONO STEP IS:

- One lamination step instead of the usual three
- Cutting treatment time in half
- Perfectly styled eyebrows and bouncy curl on eyelashes for up to 6 weeks
- Unique formula that restores and strengthens the hair structure



**PH level:** 9.0

**Volume:** 10ml

**Shelf life:** 3 years

**After opening:** 6 months



# MAIN INGREDIENTS



## 1. Thioglycolic Acid

The main agent for breaking disulfide bonds. Penetrates the hair structure, breaking disulfide bonds, making hairs flexible to change direction.

## 2. Cysteine

The only amino acid which forms disulfide bonds in the hair structure. Cysteine restores and strengthens the structure of the hair, helps to preserve color after dyeing.

## 3. Ammonium Hydroxide

An alkalizing agent that helps maintain the proper pH level for optimal thioglycolic acid and cysteine activity.

## 4. Propylene glycol

A stabilizer and moisturizer that helps maintain an optimal environment for chemical reactions, preventing hair from drying out.

# HOW IT WORKS?

---

Mono Step combines the destructive and fixing properties of a carefully balanced chemical formula that allows both reactions to occur simultaneously. This makes the lamination process faster and more convenient.

## Destruction and fixation:

The combination of thioglycolic acid and cysteine in one product requires a careful balance of concentrations. These components work in tandem: thioglycolic acid breaks the bonds, while cysteine immediately reacts with the freed disulfide bond ends, securing the new hair structure.

**1**

## Reaction optimization

Ammonium hydroxide maintains the alkaline environment necessary for thioglycolic acid and cysteine to work effectively. Propylene glycol helps to evenly distribute the active ingredients and prevents them from drying out, allowing reactions to proceed smoothly and in a controlled manner.

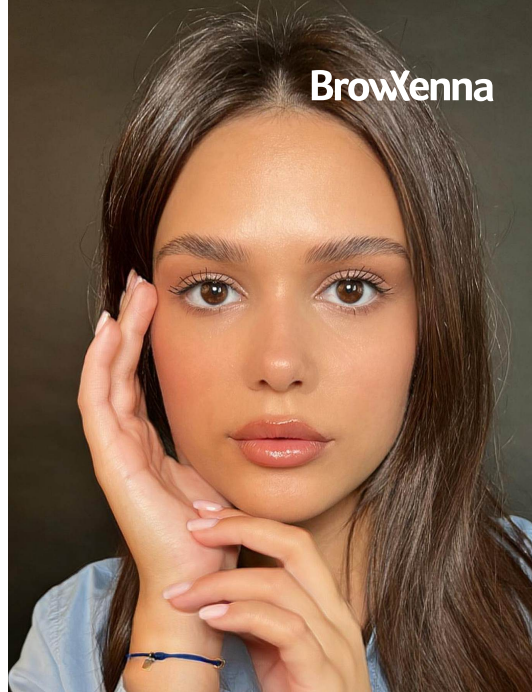
**2**

# ACTIVE CARE SYSTEM

Maintains the integrity of the hair structure, preventing moisture loss and breakage

- Organic macadamia oil
- Wheat hydrolyzed protein
- Allantoin
- Hydrolyzed Keratin
- Argan Oil
- Aloe Vera Extract
- Sodium Hyaluronate
- Panthenol (Provitamin B5)

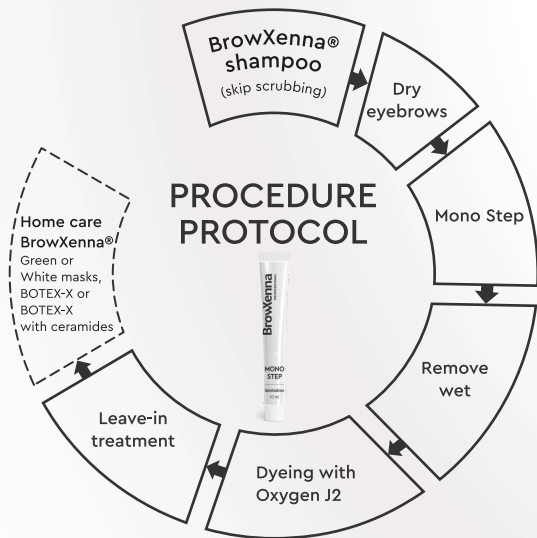
BrowXenna



## ADDITIONAL FIXATION AND STABILIZATION

We recommend combining **Mono Step** and **Oxygen J2** semi-permanent dye

- The dyeing process will stabilize and strengthen the new disulfide bonds. The H<sub>2</sub>O<sub>2</sub> contained in the dye will complete the fixation process, providing additional stability to the set hair direction.
- **Oxygen J2** contains moisturizing and nourishing ingredients that will improve the condition of eyebrows and eyelashes after the chemical procedure, providing additional protection and care.



**BrowXenna**

# BROW ⌚ EXPOSURE TIME:

- Thick, stubborn and gray: **9-10 min.**
- Very thick and stubborn: up to **12 min** under visual control.
- For medium thick hairs: **7-8 min.**
- For porous, fine, previously chemically treated hairs: **3-6 min.**

! It is not recommended to perform the lamination procedure on severely damaged and recently bleached eyebrows, instead, it is recommended to make a deep care, using the composition **P Plex Recovery**.



# LASH EXPOSURE TIME:

- For thick and stiff lashes: **10-13 min.**
- For medium-thick, natural and shiny lashes **8-9 min.**
- For thin, porous lashes previously exposed to chemical treatments: **5 min.**
- For porous, fine, previously chemically treated hairs: **3-6 min.**





BrowXenna

## CARE AND RECOVERY:

- Apply a few drops of P-Plex Recovery, distribute evenly throughout the hairs as a live-in treatment.

## RECOMMENDATIONS FOR HOME CARE:

- Use BrowXenna® SPA or P-Plex mask 2 times a week.
- Use BrowXenna BOTEX-X or BOTEX-X Concentrate with ceramides 2-3 times a week.

